

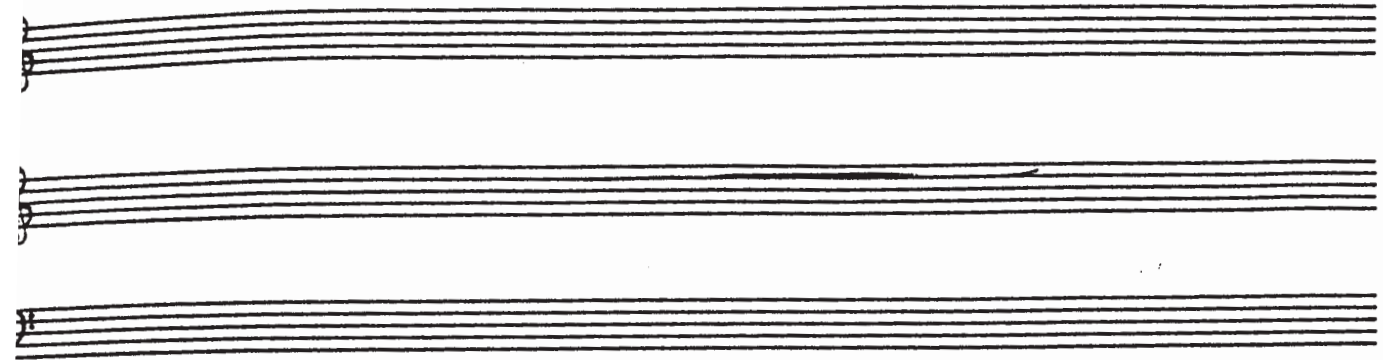
GIRLS (ENSEMBLE WOMEN)

THE BEST LITTLE
WHOREHOUSE IN TEXAS

PIANO-VOCAL-CONDUCTOR

HARD CANDY CHRISTMAS

17



1 2 3 4

SOLO

Ebmaj7 Ab Ebmaj7 Ab

5 6 7 8

Fm Bb7 C Fm9 Eb/Bb

START (sing all parts)

9 10 11 12

AMBER

HEY, MAY-BE I'LL DYE MY HAIR, MAY-BE I'LL MOVE SOME-WHERE, MAYBE I'LL

Ebmaj7 Ab Ebmaj7 Ab

(RHY GTR-CHORDS)

13 14 15 **LINDA LOU** 16

GET A CAR, — MAYBE I'LL DRIVE SO FAR — THEY'LL ALL LOSE TRACK. ME, I'LL BOUNCE RIGHT

Fm *Bb7* *C* *Fm7* *Eb/Bb*

GINGER 17 18 19 20

BACK. MAYBE I'LL SLEEP REAL LATE — MAYBE I'LL LOSE SOME WEIGHT, MAYBE I'LL

STEEL GTR *Ebmaj7* *Abmaj7* *Ebmaj7* *Ab*

LINDA LOU 21 22 23 **AMBER** 24

CLEAR MY JUNK, — MAYBE I'LL JUST GET DRUNK — ON AP-PL E WINE. ME, I'LL BE JUST

Fm7 *Bb7* *C* *Fm7* *Bb13*

P.V.C.

3.

HARD CANDY XMAS

25) (AMBER)

26 27 28

VIN STR. 2 FINE AND DAN - DY. LORD IT'S LIKE A HARD CAN-DY CHRIST-MAS, I'M BARE-LY GET-TIN

Ebmaj7 Ab Bb7 Ebmaj7

29 30 31 32

AND GINGER, LINDA LOU, DAWN

THROUGH TO-MOR - ROW, STILL I CAN'T LET SOR-ROW BRING ME WAY DOWN. I'LL BE

Ebmaj7 Ab6 Bb7 Ebmaj7

BASS

33

AMBER, GINGER

34 35 36

LINDA LOU, DAWN FINE AND DAN - DY. LORD IT'S LIKE A HARD CAN-DY CHRIST-MAS, I'M BARE-LY GET-TIN

Bva

Ebmaj7 Ab Bb Ebmaj7

n.d. (LOCO)

P.V.C.

4.

HARD CANDY XMAS

37 38 39

THROUGH TO-MOR - ROW, STILL I CAN'T LET SOR-ROW BRING ME WAY DOWN...

8va

Ebmaj7 Ab Bb

40 **END** 41 42 43

8va

{ PNO I VLN DUET (+ RHY GTR)

Ebmaj7 Ab Ebmaj7 Abmaj7

44 45 46 47

Fm7 Bb7 C Fm Bb6

(+BASS)